



**BUILD TO ENDURE.
ENGINEERED TO PROTECT.**

Shaping Coasts.
Moving **Futures.**



An aerial photograph of a coastal area, showing a breakwater or pier extending into the water. A yellow boat is visible in the water near the breakwater. The background shows a mix of land and water, with some buildings and vegetation visible on the land.

Enduring Commitment

Whether we're protecting coastlines from erosion or enabling the growth of strategic trade hubs, every **ALL MARINE** project is engineered to stand the test of time. Our clients trust us to deliver infrastructure that performs efficiently today and remains primed for tomorrow's challenges.

Our Future

In an era marked by rapid global trade, urban expansion, and climate change, visionary coastal infrastructure is essential. At All Marine, we turn challenges into opportunities by focusing on high-growth maritime regions. We deliver projects from cutting-edge breakwaters and innovative marinas to advanced rock revetments and quay walls that fuel balanced development and secure lasting coastal safety for future generations.

Strategic Framework

Our three-year roadmap builds on recent momentum and is structured around three core activity clusters that deliver high societal value:

- **Advanced Marina Solutions** We develop reliable, long-life marina infrastructure that supports renewable technologies, waterfront development, and community access to the sea.
- **Climate Adaptation & Protection** We mitigate the impact of rising sea levels and extreme weather through engineered coastal defences such as rock revetments and breakwaters that protect populations and natural ecosystems.
- **Innovative Infrastructure for Prosperity** We design and construct infrastructure such as ports, quay walls, and fixed jetties that enable trade, urban development, and national growth strategies.

In addition, our **marine salvage operations** recover equipment and vessels and work to prevent environmental damage along coastlines.

WHO WE ARE —————

At **ALL MARINE**, we are a dynamic force at the forefront of maritime infrastructure construction.

Our unwavering motto, "Built to Endure. Engineered to Protect." embodies our commitment to crafting durable solutions that safeguard coastal environments while driving progress.

Innovative Pathways

ALL MARINE charts new courses for every stakeholder. Drawing on deep industry expertise and inventive practices, we deliver comprehensive, competitive solutions in port developments, coastal protection, quay walls, fixed jetties, marinas, and breakwaters. Every project we undertake reflects our promise to blend robust engineering with strategic foresight ensuring each structure is built to last and designed to inspire future growth.

OUR CAPABILITIES

Our portfolio stands on a strong foundation of executing complex marine infrastructure projects in diverse coastal environments. By uniting specialized industry knowledge with flexible construction strategies, we maintain an unwavering focus on long-term durability.



OUR EXPERTS



At **ALL MARINE**, we understand that every successful project is built on professional integrity, trust, and seamless collaboration. We deliver projects safely, on time, and within budget by assembling a global network of dedicated professionals around your unique needs.

Our team spans a diverse range of disciplines from hydraulic, civil, and marine engineering to ecology, morphology, geology, geophysics, and marine biology. Enhanced by advanced skills in project management, operations, and risk management, our experts turn challenges into lasting successes. Investing in staff training and development is central to our ethos.

We offer a comprehensive suite of courses and training programs for both emerging talent and seasoned professionals ensuring our team remains at the forefront of innovation and industry best practices.



GOVERNANCE LEADERSHIP

At **ALL MARINE**, effective governance is built on transparency, collaboration, and accountability. We maintain close cooperation between the Supervisory Board, its committees, the Board of Management, and our stakeholders ensuring that decisions reflect both strategic vision and stakeholder trust.

Stakeholder Engagement

Our stakeholders include all groups and individuals who directly or indirectly influence, or are influenced by, our operations from public authorities and clients to partners, employees, and community representatives. We value open dialogue and shared responsibility in shaping sustainable maritime outcomes.

Board of Management

The Board of Management defines **ALL MARINE's** strategic direction and is responsible for achieving our operational objectives and overall performance. Accountable to the Supervisory Board and General Meeting of Shareholders, the Board is guided by the long-term interests of the company, the markets we serve, and the communities we impact. Every decision is made with a view toward responsible growth and sustained value creation.

Mr. Khaled Subhi Abufroukh | CEO

Engr. Khaled Subhi Abufroukh is a professional in civil engineering with a career spanning several decades in the United Arab Emirates. With thirty years experience in civil construction, Engr. Khaled has participated in the planning and implementation of large-scale developments affecting urban areas. As Group CEO, Engr. Khaled has managed multidisciplinary teams undertaking complex development initiatives. He has utilized strategic & organizational skills within the engineering sector.

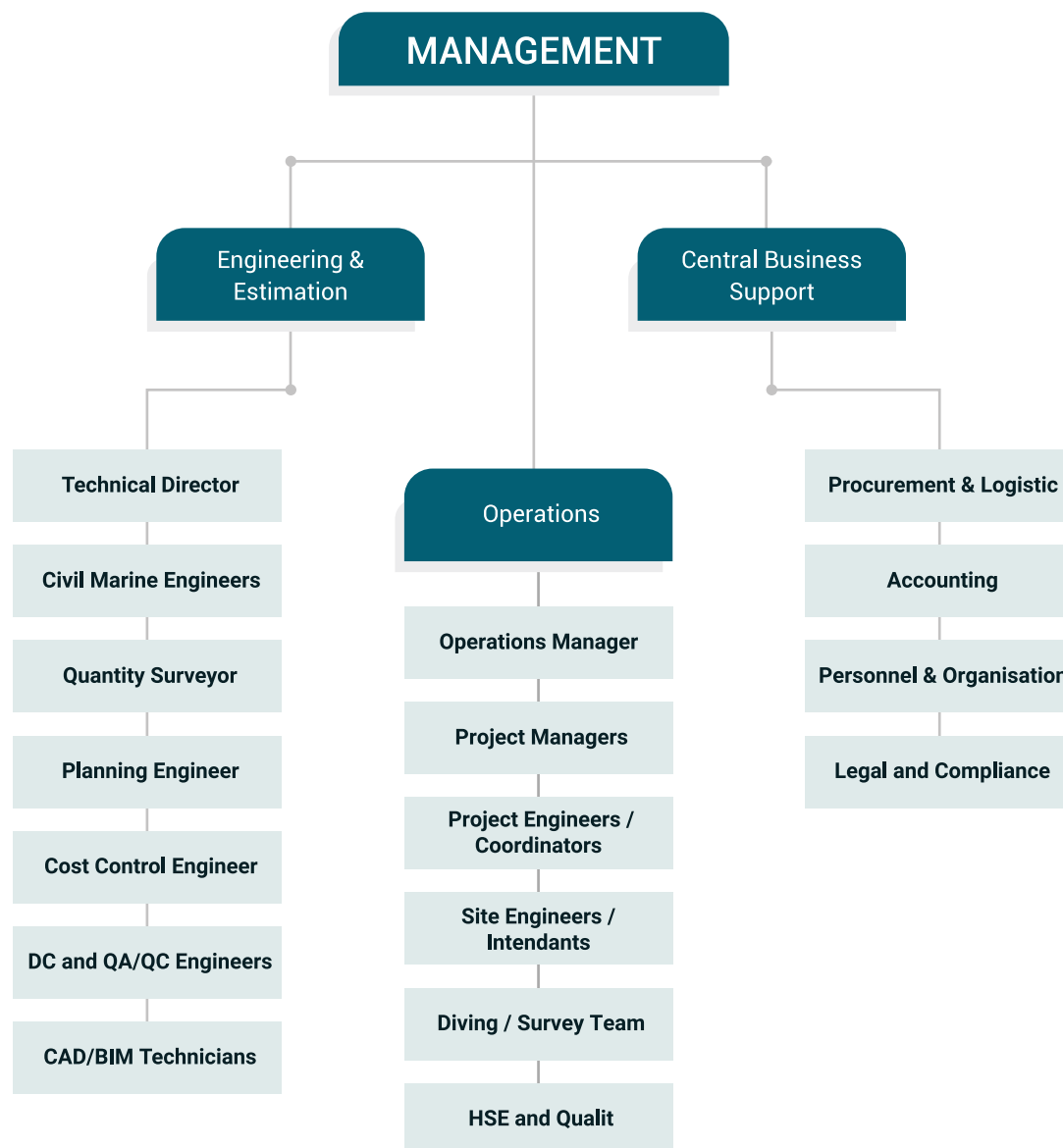
Mr. Arian Ruhi | GM

Engr. Arian Ruhi is a seasoned engineer in marine infrastructure, bringing over twenty-five years of international experience to the design and successful delivery of complex waterfront and marina developments. With a Master's degree in Mechanical Engineering, Engr. Arian has held key leadership roles across Europe, the Middle East, and the Caribbean, consistently driving performance and innovation in every position.

Mr. Nisanth C. Sasikumar | CFO

Nisanth C S is the Group CFO, overseeing financial planning, governance, and compliance for companies in contracting and industry. With a Master's in Finance, he has extensive experience in concrete, cement manufacturing, and share trading.

Since his appointment, Nisanth has managed the Group's finances by implementing policies to boost transparency, ensure regulatory compliance, & support business growth.



ORGANISATIONAL STRUCTURE

ALL MARINE operates through two specialised divisions, each supported by integrated operational functions such as:

- Tendering & Engineering
- Project Execution & Equipment Operations

This structure enables agility, cross-functional collaboration, and technical excellence across all project phases. Our headquarters is in the ASCORP Group Building, at the heart of Mussafah Industrial District, Abu Dhabi, where all corporate departments work in alignment under one roof.

CORE ACTIVITIES

Each solution is tailored to the precise environmental, technical, and commercial needs of our clients, with an uncompromising emphasis on durability, safety, and sustainability.



**COSTAL
DEFENCE**



**QUAY
WALLS**



**FIXED
JETTIES**



**DREDGING
WORKS**



MARINAS



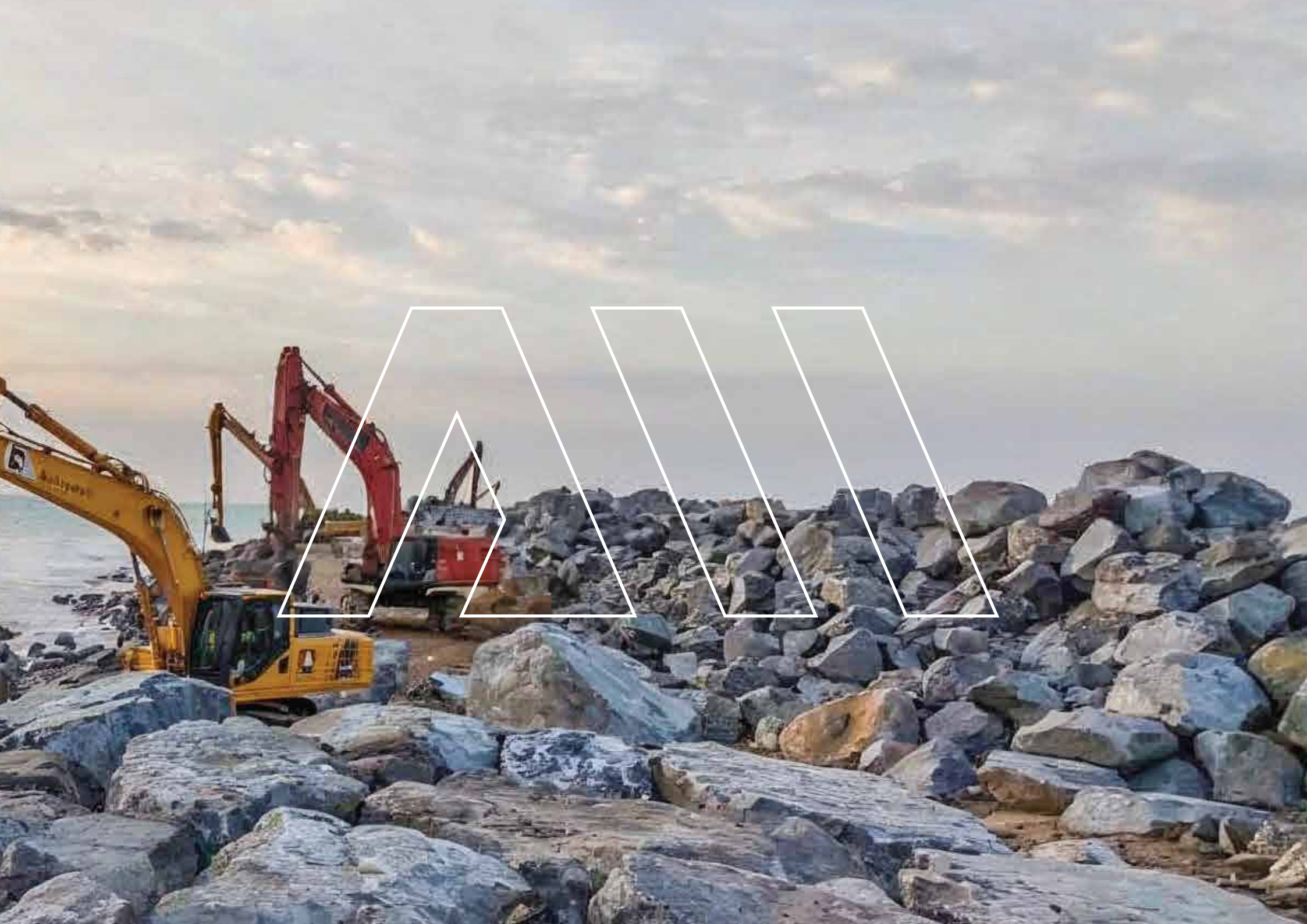
SLIPWAYS



**PILLING
WORKS**



**MARINE
PIPELINE**





ALL MARINE leads the way in protecting coastlines through engineered and nature-based solutions. We design, construct, and maintain both hard sea barriers such as rock revetments and breakwaters and soft coastal defences, including beach nourishment and nearshore replenishment.

Our approach blends innovation with environmental responsibility. In addition to traditional methods, we offer cutting-edge solutions inspired by the concept of Building with Nature such as deploying sand motors and integrating mangrove ecosystems to enhance shoreline resilience.



”
*We Have Learned
To Manage Complexity
Mitigate Risks and
Simplify Execution...*




“
*Integrated
engineering for reliable
performance*



QUAY WALLS

ALL MARINE's quay wall solutions combine advanced engineering with environmental consideration. We plot wall types including solid concrete blocks, secant piles, and retention walls to site conditions, ensuring structural resilience and efficient harbour





*Precision and
adaptability connection
and load distribution*



FIXED JETTIES

The successful execution of fixed jetty projects relies on seamless integration of piling systems, capping beams, and precast elements.

ALL MARINE applies advanced engineering analysis, site-specific design, and environmentally responsible practices to deliver fixed jetties that exemplify strength, safety, and sustainability. From conceptual design to installation and lifecycle maintenance, each project is shaped to operational requirements and site conditions, ensuring strength against marine forces and adaptability for future expansion.



DREDGING WORKS



ALL MARINE specialises in dredging, port and waterway construction, coastal defence, canal bank protection, and land reclamation. With robust project management, we ensure efficient, high-quality delivery. We offer engineering services including underwater rock fragmentation, soil improvement, and land remediation. Our multidisciplinary team and flexible equipment allow us to meet diverse project needs, consistently upholding standards of professionalism, innovation, safety, and cost-effectiveness.



*Tailored
waterfront
solutions*



MARINAS

ALL MARINE creates turnkey marinas that blend functionality and tranquillity. Using expertise in floating pontoon systems and advanced engineering, we deliver tailored waterfront solutions with quality craftsmanship from start to finish.





LAUNCH & HAULING SLIPWAYS

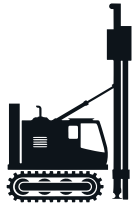


The construction of boat launch and hauling slipways necessitates the careful design of slopes, integration of modular precast components, implementation of engineered sub-bases, and robust rock protection. **ALL MARINE** delivers slipways that are durable, safe, and require minimal maintenance, effectively meeting operational requirements while withstanding environmental challenges over time.



Precise slope design modular precast parts





PILLING WORKS



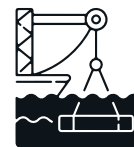
Driven Piles

We specialise in the installation of steel pipes, efficiently coordinating both transportation and placement within offshore and port settings. Our meticulous methods ensure durable foundations capable of withstanding challenging marine conditions.

Bored Piles

In areas characterised by difficult ground conditions, our rotary bored piling services offer dependable structural support. Utilising advanced technologies alongside highly skilled professionals, we provide secure and reliable foundations tailored to your project requirements.





MARINE PIPELINE

The installation of large-diameter HDPE pipelines on the seabed is a highly technical procedure that requires meticulous planning. **ALL MARINE** typically employs a controlled sinking technique, achieved by gradually flooding the pipeline. Skilled diving teams are engaged to ensure accurate positioning of the pipeline.



SAFETY

Safety remains a core priority across all organisational operations. The organisation is dedicated to cultivating a workplace environment that proactively reduces the risk of injuries and accidents, while supporting the well-being of employees and subcontractors alike. As part of the Good Stewardship pillar, the health and safety programme is structured to drive continual improvement in safety performance.

At **ALL MARINE**, a behavioural approach underpins our safety initiatives. Training sessions and workshops have facilitated the adoption of tools that enhance employee communication with stakeholders, thereby reinforcing sustainable safety practices that extend beyond mere regulatory compliance.

Consistent engagement from staff, subcontractors, and management has resulted in marked improvements in our safety record over time.

STANDARD & QUALITY

At **ALL MARINE**, we address global challenges like population growth, economic shifts, climate change, and the energy transition by providing sustainable maritime and inland infrastructure solutions. Based in the UAE and recognized as an SME, we adhere to international standards—ISO 9001:2015, ISO 14001:2015, and ISO 45001:2018—for quality, environment, and safety.



SUSTAINABILITY



At **ALL MARINE**, our corporate strategy is grounded in anticipating and responding to transformative global trends—population growth, economic expansion, climate change, and the energy transition. These shifts are steadily increasing demand for maritime and inland infrastructure, adaptive climate solutions, and forward-looking development.

Purpose

We create and protect prosperity while advancing the global energy transition.

Mission

To be a leader in maritime infrastructure, shaping coasts and unlocking new horizons for every stakeholder.

Sustainable Growth

Sustainability sits at the heart of our strategy. We pursue long-term, responsible growth across all operations prioritizing environmental impact, operational excellence, and enduring partnerships.

Strategic Framework

Our three-year roadmap builds on recent momentum and is structured around three core activity clusters that deliver high societal value:

- Advanced Marina Solutions
- Climate Adaptation & Protection
- Innovative Infrastructure for Prosperity

In addition, our marine salvage operations recover equipment and vessels and work to prevent environmental damage along coastlines.

Our Strategic Pillars 2025 - 2027

The success of **ALL MARINE'S** strategy is underpinned by four guiding principles:

Good Stewardship:

Acting responsibly in every decision, with long-term value in mind.

Human Excellence :

Investing in people, leadership, and a culture of growth.

Innovation:

Embracing smart, sustainable solutions that set us apart.

Distinguishing Assets:

Leveraging technical expertise, strategic insight, and trusted relationships.

PROJECTS

ALL MARINE delivers bold solutions that shape the UAE's coastlines and maritime future. From bustling ports to serene marinas and shorelines protection, our portfolio spans a wide spectrum of marine infrastructure across the Emirates. With deep technical expertise and a steadfast commitment to safety, our multidisciplinary teams execute projects that balance innovation with

Contributing to Society

ALL MARINE creates climate-adaptive infrastructure to protect people and nature from climate change impacts. As sea levels rise and extreme weather becomes more frequent, especially in coastal cities like those in the UAE, our tailored solutions help maintain flood safety and support long-term resilience.

In line with UN Sustainable Development Goal 13 and the UAE National Climate Change Plan, we use advanced technology and expert teams to deliver flood protection and coastal defences. Our expertise in marine engineering supports the development of resilient waterfronts, modern ports, eco-friendly marinas, and reclaimed land for sustainable urban spaces.

By prioritizing innovation and sustainability, ALL MARINE builds infrastructure that strengthens communities and promotes harmony between people and the environment—today and for the future.



Good Stewardship | Human Excellence | Innovation | Distinguishing Assets



OUR CLIENTS



دائرة البلديات والنقل
DEPARTMENT OF MUNICIPALITIES
AND TRANSPORT



قيادة الأشغال العسكرية
Command of Military Works

Jacobs



MUDON



نيوم
NEOM





**SHARE WITH US
YOUR CHALLENGES'
GIVE US A CALL...**

P.O. Box: 90984 | Abu Dhabi, United Arab Emirates
+971 251 344 29 | info@allmarineuae.com | www.allmarineuae.com

